



**DBT-Supported Genomic Facility at UDSC,
CIIDRET**
University of Delhi South Campus
Benito Juarez Road,
New Delhi-110021

w w.e.f 1st Jan 2022
Phone: 011-24117542
E.mail: udscdnaseq@gmail.com
: ciidret@south.du.ac.in

Order form for DNA sequencing by primer walking(Service code C5) For Details read technical information) (Please fill out one form for each DNA-Primer combination)

Name and Postal address

Phone (with code)..... **Mobile No****Email**.....

Payment Receipt in name of..... **Signature**.....

Payment: Rs-----**Transaction No./UTR No.** with date -----

Name of the Bank-----

Service code

Sample ID

| | | | | | | | | | |
|--|--|--|--|--|--|--|--|--|--|
| | | | | | | | | | |
|--|--|--|--|--|--|--|--|--|--|

Type of sample (Plasmid/PCR product)----- **Host** -----
 Plasmid backbone (pUC, pBR, pBluescript, pGEM etc.)----- **Antibiotic marker** -----
 Size of plasmid (kb)----- **Size of insert / PCR product (kb/bp)** -----
 Concentration of DNA/PCR product----- **Cloning sites for insert** -----
 Expected GC Content (%)----- **Expected Homopolymer (Yes/No)** -----

Forward primers for ends (T7, T3/SP6/M13R/M13F) -----

Specific Primer (if not provided by facility) name, length, sequence -----

Primer sequence 5' to 3' (18-23 mer)

| | | | | | | | | | | | | | | | | | | | | |
|--|--|--|--|--|--|--|--|--|--|--|--|--|--|--|--|--|--|--|--|--|
| | | | | | | | | | | | | | | | | | | | | |
|--|--|--|--|--|--|--|--|--|--|--|--|--|--|--|--|--|--|--|--|--|

Annealing temperature of specific primer -----

conc.of specific primer-----pmole/ul

Concentration of specific primer-----pmol/μl.,

Purification grade (OPC/HAP/HPLC/Desalted) -----

Reverse primers for ends (T7, T3/SP6/M13R/M13F) -----

Specific Primer (if not provided by facility) name, length, sequence -----

Primer sequence 5' to 3' (18-23 mer)

| | | | | | | | | | | | | | | | | | | | | |
|--|--|--|--|--|--|--|--|--|--|--|--|--|--|--|--|--|--|--|--|--|
| | | | | | | | | | | | | | | | | | | | | |
|--|--|--|--|--|--|--|--|--|--|--|--|--|--|--|--|--|--|--|--|--|

Annealing temperature of specific primer -----

conc.of specific primer-----pmole/ul

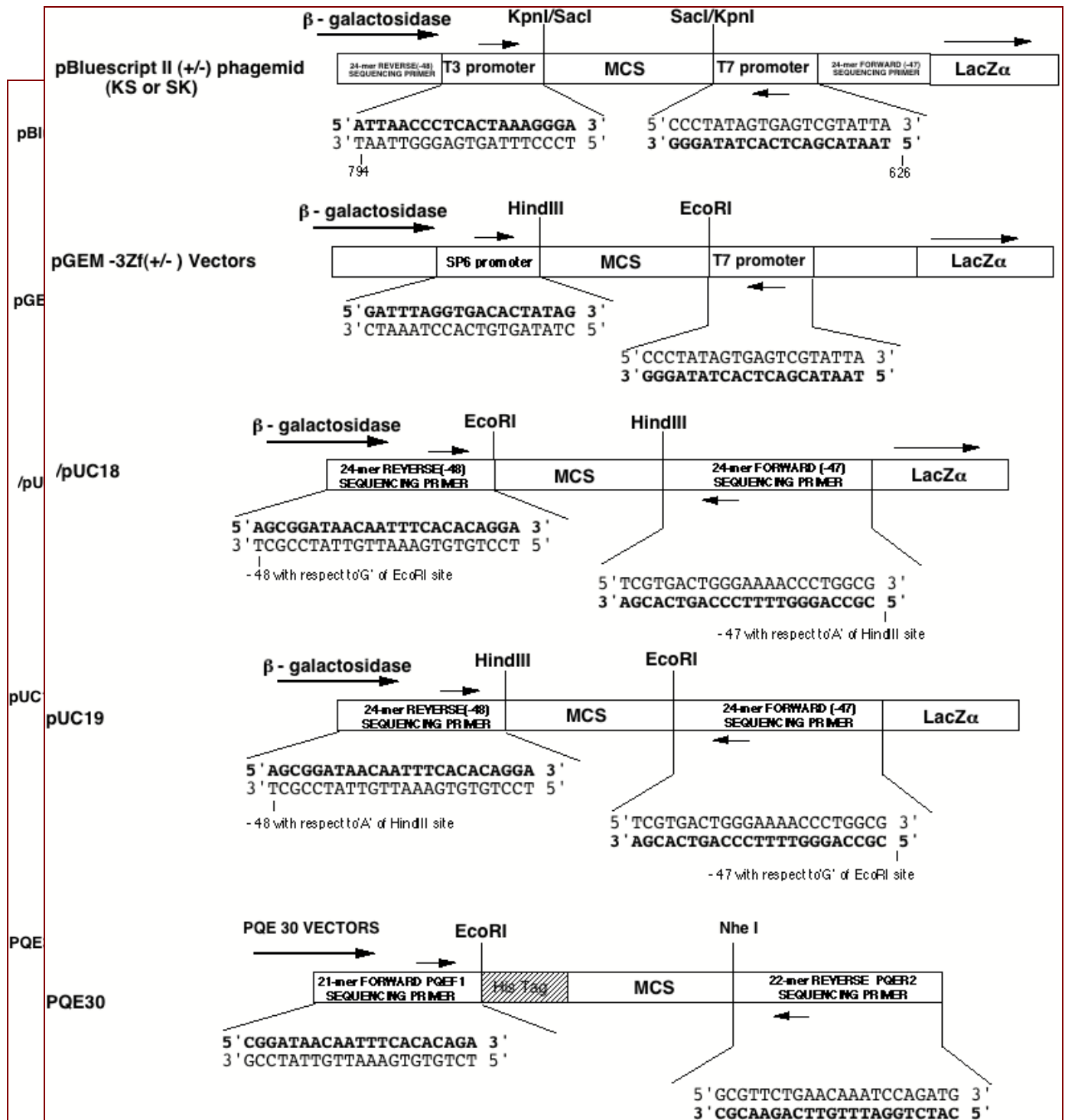
Concentration of specific primer-----pmol/μl.,

Purification grade (OPC/HAP/HPLC/Desalted) -----

For Office use

Date of receipt..... Date of result.....

Comments.....



Primer sequences are shown in bold letters

| | |
|--|----------------------------------|
| T7TN TERMINATER PRIMER 20 MER NEB | : 5' GTCGGTTGAGTCGAAGGAAA 3' |
| T7 PROMOTER PRIMER 20MER=NEB1248 | : 5' TAATACGACTCACTATAGGG 3' |
| T3 PROMOTER PRIMER 20MER=NEB1228 | : 5' ATTAACCCCTCACTAAAGGGA 3' |
| SP6 PROMOTER PRIMER 19MER=PROMEGA Q5011: | 5' GATTTAGGTGACACTATAG 3' |
| M13 REVERSE(-48) PRIMER 24MER=NEB1233 | : 5' AGCGGATAACAATTTACACAGGA 3' |
| M13 FORWARD(-47) PRIMER 24MER=NEB1224 | : 5' CGCCAGGGTTTTCCCAGTCACGAC 3' |
| PQE.F1 (FORWARD PRIMER 21MER)=QIAGEN | : 5' CGGATAACAATTTACACAGA 3' |
| PQE.R2 (REVERSE PRIMER 22MER)=QIAGEN | : 5' CGCAAGACTTGTTTAGGTCTAC 3' |