



**DBT-Supported Genomic Facility at UDSC, CIIDRET**  
 University of Delhi South Campus  
 Benito Juarez Road,  
 New Delhi-110021

**w w.e.f 1st Jan 2022**  
 Phone: 011-24117542  
 E.mail: udscdnaseq@gmail.com  
 : ciidret@south.du.ac.in

**Order form for DNA sequencing by primer walking(Service code D1) For Details read technical information)** (Please fill out one form for each DNA-Primer combination)

**Name and Postal address** .....

**Phone** (with code)..... **Mobile No** .....**Email**.....

**Payment Receipt in name of**..... **Signature**.....

**Payment:** Rs-----**Transaction No./UTR No.** with date -----

**Name of the Bank**-----

**Service code**

**Sample ID**

|  |  |  |  |  |  |  |  |  |  |
|--|--|--|--|--|--|--|--|--|--|
|  |  |  |  |  |  |  |  |  |  |
|--|--|--|--|--|--|--|--|--|--|

Type of sample (Plasmid/PCR product)----- Host -----  
 Plasmid backbone (pUC, pBR, pBluescript, pGEM etc.)----- Antibiotic marker -----  
 Size of plasmid (kb)----- Size of insert / PCR product (kb/bp) -----  
 Concentration of DNA/PCR product----- Cloning sites for insert -----  
 Expected GC Content (%)----- Expected Homopolymer (Yes/No) -----

**Forward primers for ends (T7, T3/SP6/M13R/M13F) -----**

**Specific Primer** (if not provided by facility) name, length, sequence -----

Primer sequence 5' to 3' (18-23 mer)

|  |  |  |  |  |  |  |  |  |  |  |  |  |  |  |  |  |  |  |  |
|--|--|--|--|--|--|--|--|--|--|--|--|--|--|--|--|--|--|--|--|
|  |  |  |  |  |  |  |  |  |  |  |  |  |  |  |  |  |  |  |  |
|--|--|--|--|--|--|--|--|--|--|--|--|--|--|--|--|--|--|--|--|

Annealing temperature of specific primer -----

conc.of specific primer-----pmole/ul

Concentration of specific primer-----pmol/μl.,

Purification grade (OPC/HAP/HPLC/Desalted) -----

**Reverse primers for ends (T7, T3/SP6/M13R/M13F ) -----**

**Specific Primer** (if not provided by facility) name, length, sequence -----

Primer sequence 5' to 3' (18-23 mer)

|  |  |  |  |  |  |  |  |  |  |  |  |  |  |  |  |  |  |  |  |
|--|--|--|--|--|--|--|--|--|--|--|--|--|--|--|--|--|--|--|--|
|  |  |  |  |  |  |  |  |  |  |  |  |  |  |  |  |  |  |  |  |
|--|--|--|--|--|--|--|--|--|--|--|--|--|--|--|--|--|--|--|--|

Annealing temperature of specific primer -----

conc.of specific primer-----pmole/ul

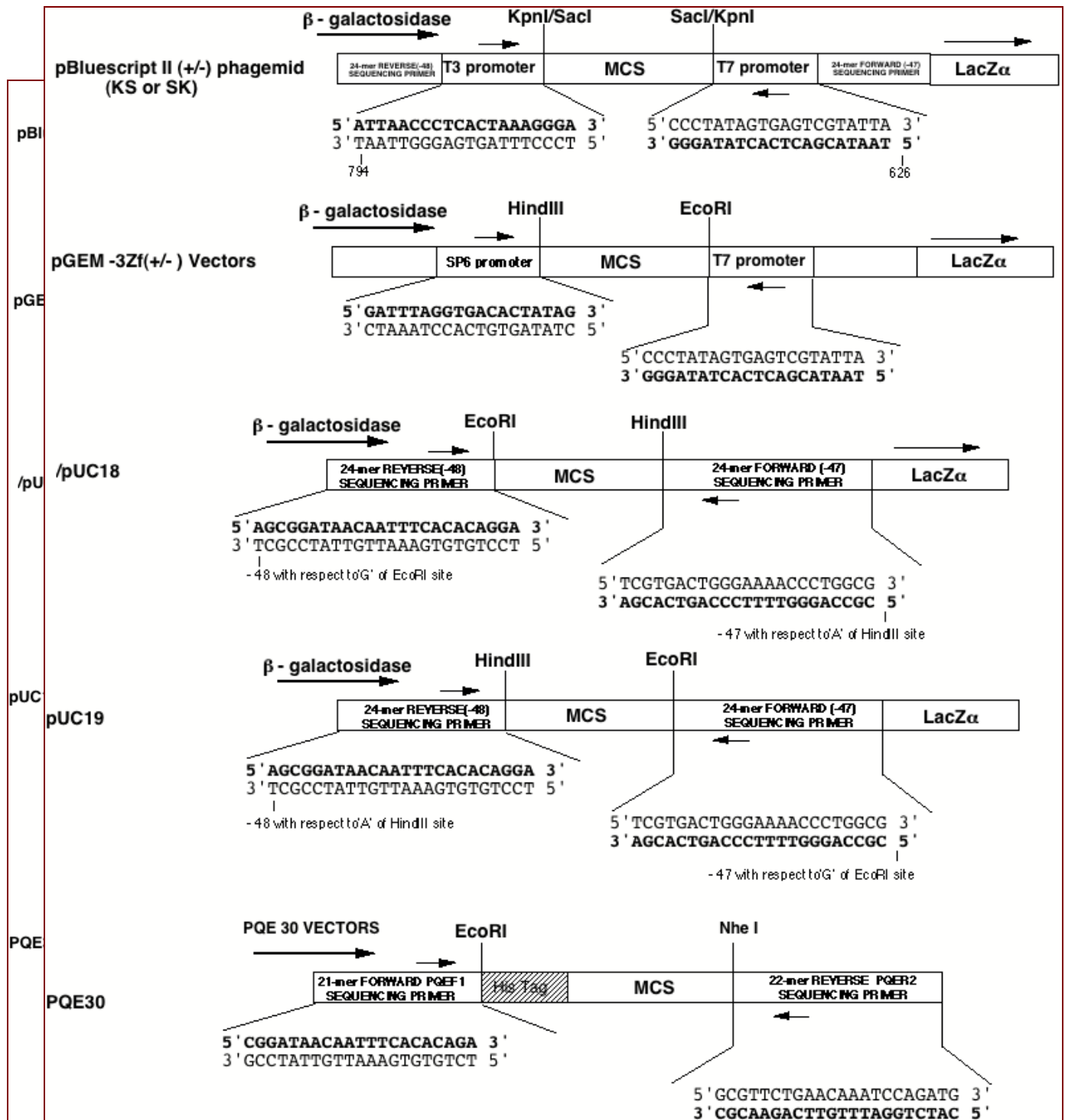
Concentration of specific primer-----pmol/μl.,

Purification grade (OPC/HAP/HPLC/Desalted) -----

**For Office use**

Date of receipt..... Date of result.....

Comments.....  
 .....  
 .....



**Primer sequences are shown in bold letters**

|  |                                  |
|--|----------------------------------|
| T7TN TERMINATER PRIMER 20 MER NEB        | : 5' GTCGGTTGAGTCGAAGGAAA 3'     |
| T7 PROMOTER PRIMER 20MER=NEB1248         | : 5' TAATACGACTCACTATAGGG 3'     |
| T3 PROMOTER PRIMER 20MER=NEB1228         | : 5' ATTAACCCCTCACTAAAGGGA 3'    |
| SP6 PROMOTER PRIMER 19MER=PROMEGA Q5011: | 5' GATTTAGGTGACACTATAG 3'        |
| M13 REVERSE(-48) PRIMER 24MER=NEB1233    | : 5' AGCGGATAACAATTTACACAGGA 3'  |
| M13 FORWARD(-47) PRIMER 24MER=NEB1224    | : 5' CGCCAGGGTTTTCCCAGTCACGAC 3' |
| PQE.F1 (FORWARD PRIMER 21MER)=QIAGEN     | : 5' CGGATAACAATTTACACAGA 3'     |
| PQE.R2 (REVERSE PRIMER 22MER)=QIAGEN     | : 5' CGCAAGACTTGTTTAGGTCTAC 3'   |